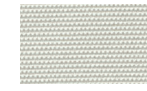
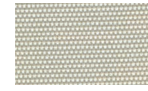


(agora) Panama

100% Solution Dyed Acrylic



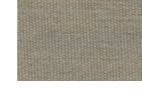
Panama BLANCO
1223



Panama MARFIL
3741



Panama BEIGE-CAFE
3738



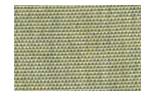
Panama INTEGRAL
3740



Panama LINO
8008



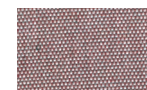
Panama COCO
8001



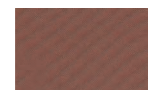
Panama CITRON
8003



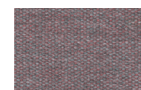
Panama TANGERINE
8000



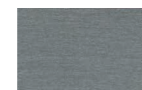
Panama SCARLET
8005



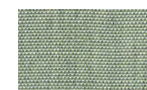
Panama CHERRY
3660



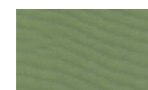
Panama GARNET
8012



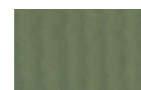
Panama MALVA
8010



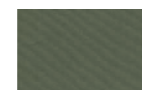
Panama MENTA
8004



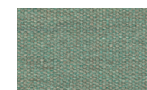
Panama GREEN
3666



Panama GRASS
3665



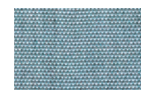
Panama ALGA
3667



Panama OLIVA
8002



Panama BASIL
3668



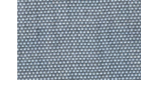
Panama ACQUA
8006



Panama ICE
8014

(agora) Panama

100% Solution Dyed Acrylic



Panama ARTIC
8007



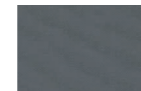
Panama OCEAN
3661



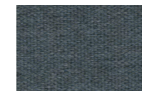
Panama LAPIS
3662



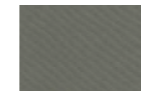
Panama SLATE
3664



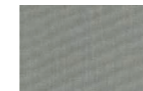
Panama FLINT
3663



Panama BRISA
8011



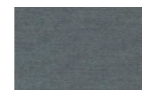
Panama MINERAL
3742



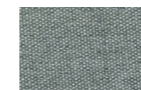
Panama FOSSIL
3659



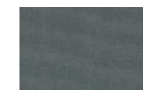
Panama CLOUD
3658



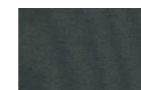
Panama ASH
3743



Panama SIENA
8009



Panama STONE GREY
3669



Panama ONYX
3667

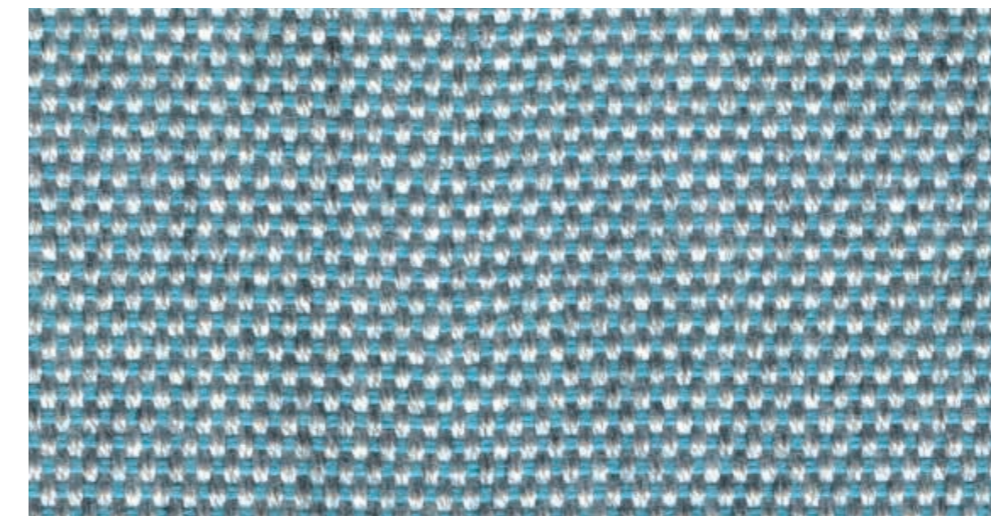



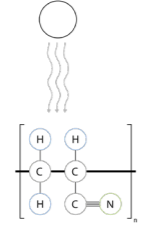



Panama GRAFITO
8013



(agora) Panama

100% Solution Dyed Acrylic



TECHNICAL FILE CARACTERISTICAS GENERALES	Panama 100% Solution Dyed Acrylic		
Composition / Composición			
Width / Ancho	160 cm / 63"		
Weight / Peso	280 gr / m ²		
Length of rolls / Longitud de las piezas	50 ml		
Finish Acabado	Water repellent with stain resistant treatment Hidrófugo con tratamiento antimanchas		
Light fastness / Solidez a la luz	7 / 8		
Fiber structure Estructura de fibra	<p>The strong link between the carbon is not destroyed, so the color does not change with the passage of time.</p> <p>El fuerte vínculo entre el carbono no se destruye, por lo que el color no cambia con el paso del tiempo.</p>  		
Warranty / Garantía	5 years* / 5 años**		
Tolerance Tolerancia	Sensitive values of tolerance of + / - 5% Valores susceptibles de tolerancia de + / - 5%		
Cleaning instructions / Manutención			
Application / Aplicaciones			
Different optional fabric treatment Otros acabados opcionales	<table border="0"> <tr> <td>WATERPROOF / IMPERMEABLE - laminated 1000 mm - laminado 1000 mm</td> <td>FLAME RETARDANT / IGNIFUGO - UNE 1021 PARTS 1-2 - IMO PEF 2010 Annex 1, Part 8 - BS 5852 Cigarette & Match</td> </tr> </table>	WATERPROOF / IMPERMEABLE - laminated 1000 mm - laminado 1000 mm	FLAME RETARDANT / IGNIFUGO - UNE 1021 PARTS 1-2 - IMO PEF 2010 Annex 1, Part 8 - BS 5852 Cigarette & Match
WATERPROOF / IMPERMEABLE - laminated 1000 mm - laminado 1000 mm	FLAME RETARDANT / IGNIFUGO - UNE 1021 PARTS 1-2 - IMO PEF 2010 Annex 1, Part 8 - BS 5852 Cigarette & Match		



ТД "Технический Текстиль"
+7 (499) 288 77 10
www.ttex.ru

(*) The Agora warranty covers the fabric becoming unserviceable as a result of loss of colour or strength from normal exposure conditions, including sunlight, mildew, rot and atmospheric chemical. If the fabric has been properly installed, utilized and main tained. The warranty does not cover labour and installation supplied by the dealer. The warranty also does not apply against deterioration of any kind due to abusive use, accidental burns, negligence or perforations.

(**) La garantía Agora cubre un anormal deterioro de la fibra debido a la pérdida de color o resistencia siempre que existan unas condiciones de exposición normales, incluyendo el sol, moho, putrefacción y agentes atmosféricos en general, siempre y cuando la fibra haya sido instalada, utilizada y mantenida correctamente. La garantía no cubre los trabajos de instalación del distribuidor. La garantía tampoco cubre, en cualquier caso, el deterioro debido al uso abusivo, quemaduras accidentales, negligencia o perforación.



WATER RESISTANT



STAIN RESISTANT



MOLD RESISTANT



UV PROTECT



UV RESISTANT



DURABLE STRONG



NO CONDUCTOR



EASY TO CLEAN

Panama
COLLECTION



Tuvatextil, S.L.
Ctra. Pla de Sta. Maria s/n,
43817 - El Pont d'Armentera - SPAIN
Tel: +34 977 639 132
Fax: +34 977 639 268

info@tuvatextil.com
www.tuvatextil.com